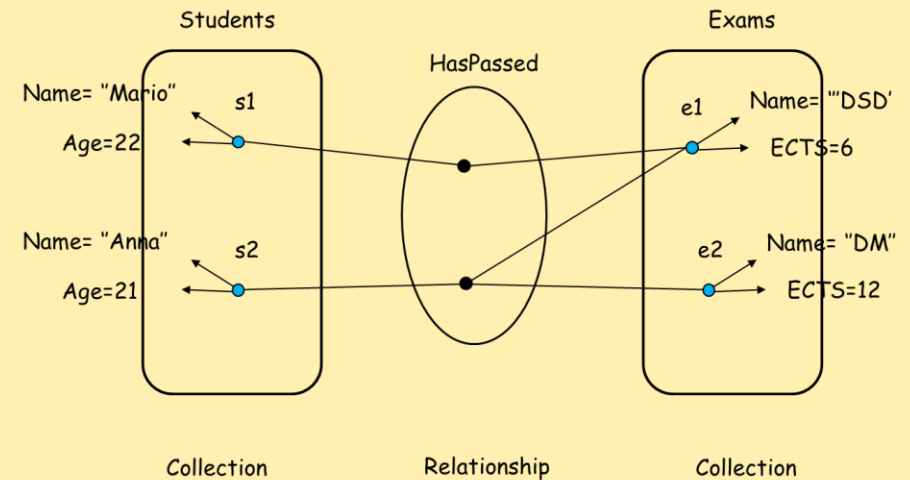
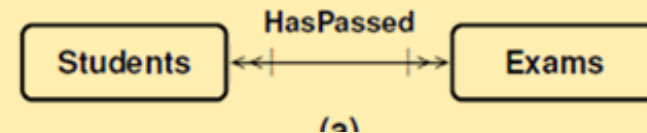


- Flights have seats. At check-in, a seat is assigned to a passenger.

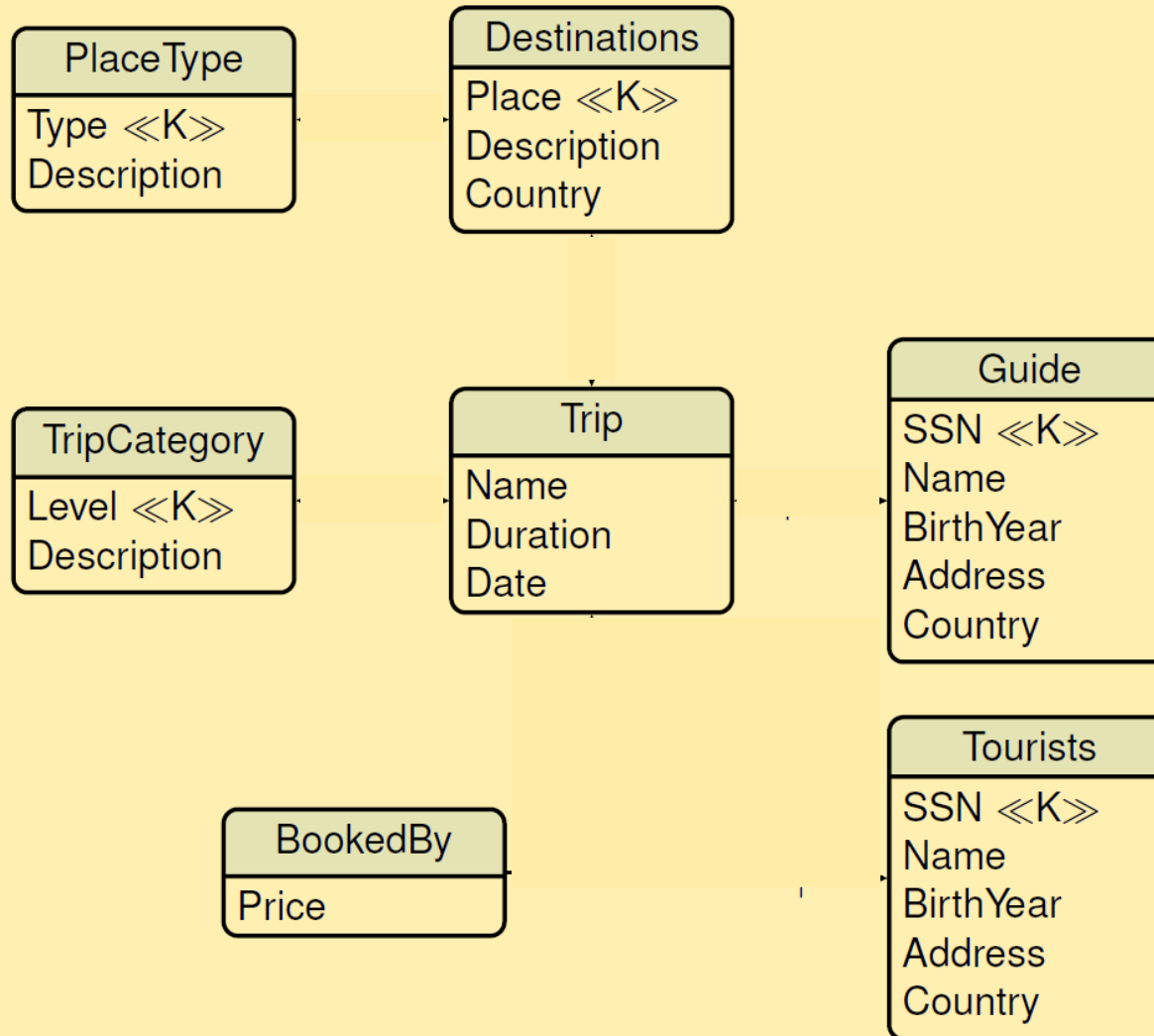
- Provide concrete knowledge (entities, properties, collections, relationships)



- Provide an ODM schema



TRAVEL AGENCY Operational DB - Complete the schema!



- A **train** has a unique number and a driver. Trains are either **local** or **express**, but never both. A **station** has a unique name and an address. Stations are either **main** or **secondary**, but never both. Local trains stop at all stations. Express trains stop only at the main stations. Each **stop** of a train in a station has a duration time. Design a conceptual schema for the database.
 - Provide an ODM schema